

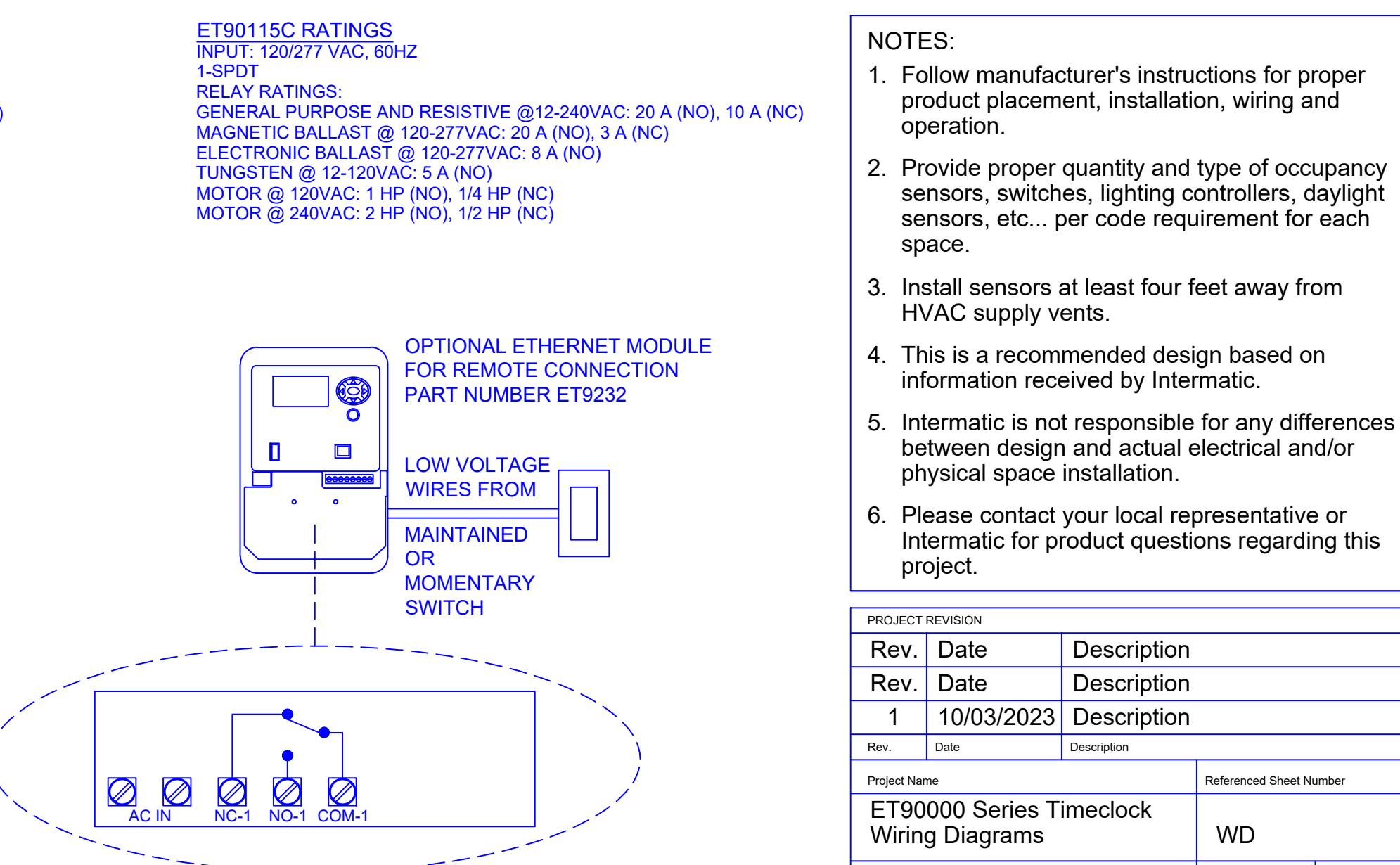
GROUND REMOTE 8 5V REMOTE 7 5V REMOTE 6 5V REMOTE 5 GROUND REMOTE 4 5V REMOTE 3 5V REMOTE 2 5V REMOTE 1

ET90000 4, 8, 12 AND 16 RELAY REMOTE OVERRIDE INPUT TERMINAL

MAINTAINED OR MOMENTARY SWITCH

MOMENTARY SWITCH INTERMATIC PART NUMBER: MS-101-WH

18/2 AWG STRANDED WIRE
1000FT MAXIMUM LENGTH



- NOTES:**
1. Follow manufacturer's instructions for proper product placement, installation, wiring and operation.
 2. Provide proper quantity and type of occupancy sensors, switches, lighting controllers, daylight sensors, etc... per code requirement for each space.
 3. Install sensors at least four feet away from HVAC supply vents.
 4. This is a recommended design based on information received by Intermatic.
 5. Intermatic is not responsible for any differences between design and actual electrical and/or physical space installation.
 6. Please contact your local representative or Intermatic for product questions regarding this project.

PROJECT REVISION			
Rev.	Date	Description	
Rev.	Date	Description	
1	10/03/2023	Description	
Rev.	Date	Description	
Project Name		Referenced Sheet Number	
ET90000 Series Timeclock Wiring Diagrams		WD	
Project Location		Scale	Sheet Number
City, State		N.T.S.	1 of 1